



SPRINGS

USER GUIDE

v1.3

SPRINGS.....	3
INSTALLATION.....	3
REGISTRATION.....	4
PARAMETERS.....	5
LIST.....	5
SPRING REVERBS.....	6
BAXANDALL EQ.....	10
BANDWIDTH.....	10
EDITOR.....	10
FEATURES.....	11
PARAMETER LOCK.....	11
EDIT VALUE.....	11
TAIL BLOCK SIZE.....	11
CASE SOUND FX.....	11
WINDOW SIZE.....	12
PRESET COPY/PASTE.....	12
ENABLE/DISABLE NOTIFICATIONS.....	12
SWAP MOUSE BUTTONS.....	12
GUI ACCELERATION.....	12
DARK / LIGHT THEME.....	12
END.....	13
WHERE IS EVERYTHING?.....	13
CREDITS.....	13
EULA.....	13
THANK YOU.....	13

SPRINGS

Springs is a plugin which features a collection of vintage spring reverbs paired with an authentic Baxandall EQ emulation. Springs features emulations from 15 types of spring reverbs, ranging from a *long 6-spring pipe* to a *tiny battery-powered single-spring* unit. We have used a combination of convolution and modelling to recreate the vintage character of each reverb.

Spring reverbs were usually paired with tone stacks from guitar amplifiers. Springs features one of the most iconic and unique sounding tone stack equalizers: the Baxandall EQ. A classic Baxandall tone stack usually features just the bass and treble bands, but we have also added a Mid band (with control over the Q).

INSTALLATION

MAC OS

- Double click on the DMG archive to extract it
- Right click on the PKG installer and click open
- Follow the instructions to install the plug-in(s)

WINDOWS

- Extract the ZIP archive
- Double click on the setup file (.exe)
- Follow the instructions to install the plug-in(s)

REGISTRATION

You can open the registration window by clicking on the icon ≡ next to the bypass button, in the top-right corner.

You can choose between *Online* and *Offline* authorization.

ONLINE


- If you haven't created an account yet, you can [signup here](#) using the same email address used at check out.
- Just input your credentials into the text fields and click on Log In



A screenshot of a login dialog box. At the top is a back arrow on the left and a close 'X' on the right. Below them is an icon of a flask with liquid and bubbles. The title 'Log in to authorize' is centered. Below the title are two input fields: the first is labeled 'Email' with an envelope icon, and the second is labeled 'Password' with a key icon. Below these is a radio button labeled 'Remember me'. At the bottom is a 'Log In' button. Below the button are two links: 'Forgot Your Pass?' and 'Sign Up'.

OFFLINE

- Download the license file from [your account](#).
- Copy the file to your offline computer.
- Just drag and drop the license into the registration window or click on the *Load License File* button and browse to the downloaded license.



A screenshot of an offline activation dialog box. At the top is a back arrow on the left and a close 'X' on the right. Below them is an icon of a flask with liquid and bubbles. The title 'Offline activation' is centered. Below the title is the text 'Drop the license file here or'. At the bottom is a 'Load License File' button.

PARAMETERS

LIST

Main

<i>Bandwidth</i>	Dual filter: LowPass (right), HiPass (left)
<i>Input</i>	Controls the amount of input signal
<i>Drive</i>	Controls the amount of pre-amp distortion
<i>Dry</i>	Controls the amount of dry signal
<i>Wet</i>	Controls the amount of wet signal

Springs

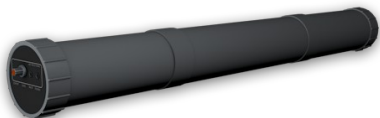
<i>Decay</i>	Selects a short or long decay for the reverb
<i>HQ</i>	Toggles the High Quality mode on/off. HQ mode uses more CPU but adds more details to the emulation
<i>Phase</i>	Inverts the phase of the reverb signal
<i>Noise</i>	Controls the volume of the background noise
<i>Env</i>	Enables/Disables the envelope to activate the noise only when an input signal is passing through
<i>Pre Delay</i>	Applies a delay in ms before the reverb signal
<i>Stereo Width</i>	Controls the amount of stereo width (from mono to wide)
<i>Emphasis</i>	Boosts a specific high frequency (slightly different for each emulation)
<i>Compress</i>	Applies a soft compression to the reverb signal

Baxandall EQ

<i>Freq (Bass, Mid, Treble)</i>	Controls the frequency of the selected band
<i>Gain (Bass, Mid, Treble)</i>	Controls the gain of the selected band
<i>Mid Q</i>	Controls the Q of the mid band
<i>Bypass</i>	Enables/Disables the EQ
<i>Mode</i>	Applies the EQ to the Mix (dry+wet) or Wet only signal
<i>Soft Clip</i>	Applies a Soft Clip that smooths the peaks over 0dB

SPRING REVERBS

We have collected and emulated several spring reverbs. Each one has its own sound, with different amounts and length of springs, overdrive, and noise.



GBS

Used by the BBC. A feat of British ingenuity - a pair of Accutronics spring tanks housed in a length of plastic drainpipe.

Circa 1970-79

6 springs, 28cm / 11"



RE-201

Classic Japanese Tape Echo with Reverb Tank. Although used mostly for their echo sections, these units have a very distinctive and raw spring reverb sound.

Released in 1974

2 springs 15.5cm / 6.10"

1 spring 12.7cm / 5"

(less wide than the other two)



RE-200

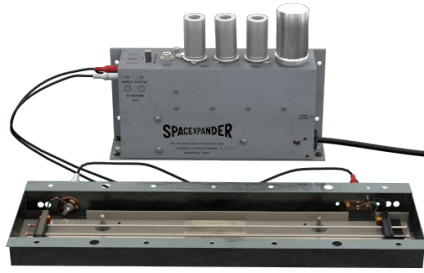
Classic Japanese Tape Echo with Reverb Tank. Precursor of the legendary RE-201 Space Echo.

Released in 1973

2 springs 15.5cm / 6.10"

1 spring 12.7cm / 5"

(less wide than the other two)



Spacexponder

Iconic spring reverb made in the USA, with RCA/Sylvania valves and Gibbs reverb tank. Re-capped and serviced for a cleaner sound.

Circa 1960.

2 springs, 35.5cm / 14"



RV-1

Classic American Spring Reverb. Re-capped and serviced for a cleaner sound.

Circa 1970-79

3 springs, 28cm / 11"



SR-202W

Solid-state reverberation amplifier. Originally designed to add reverb to home stereos, this unit was modded to be "studio-ready". Used by many artists as the "secret weapon" to add depth and character to vocals.

Released in 1971

2 springs, 14.5cm / 5.70"
(one spring wider)



HR-12

Vintage Japanese spring reverb. As per their Owner's Manual, a "Superior System Selector Unit", branded as "Echo Unit".

Dating from the late 60s or early 70s

2 springs, 28cm / 11"



Twin

Classic American Guitar Amplifier.

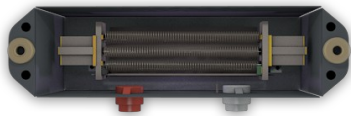
Released in 1985.



Meza

Classic American Guitar Amplifier.

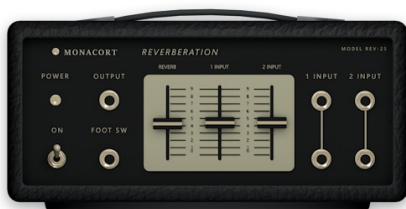
Released in 1999.



A-199

Modern eurorack spring reverb module.

3 springs, 8cm / 3.15"



REV-25

Vintage Japanese spring reverb. Also rebranded as AM-534.

From the 70s

1 spring, 15.2cm / 6"



RA-844

Very small, battery powered, solid-state reverberation amplifier. This one is an OEM version as the unit was often rebranded by several companies.

From the late 70s or early 80s

1 spring, 8.5cm / 3.34"



Audition

A small guitar head amplifier, very noisy, and with a very basic spring reverb.

Released in 1975

1 spring, 15.2cm / 6"



Echo Box

Probably the smallest spring reverb ever. Due to the tiny spring, this unit sounds more like a boomy echo than a spring reverb.

Circa 1970-79

1 spring, 5cm / 1.96"



HVS-1

Germanium-powered spring reverb made for vintage Stereos/Tuners. Made in Germany but with a USA reverb tank.

Released in 1964

2 springs, 14cm / 5.5"

BAXANDALL EQ

The Baxandall EQ is a classic type of EQ, mostly found in guitar amps, and is usually limited to only a single tone control or two bands (bass and treble). We have added a third band (mid with Q control) to further shape the reverb sound.



Our Baxandall EQ emulation is based on a passive circuit. The important characteristic is that the bands interact with each other. This may seem like an unwanted behavior, but it's one of the reasons why the Baxandall EQ curves are smooth and musical.

BANDWIDTH

With the Bandwidth control you can filter the input signal that goes into the spring emulation.

Some springs have a *boomy* low end, some are too bright and *boingy*. By limiting the bandwidth of the signal you can dampen these characteristics.

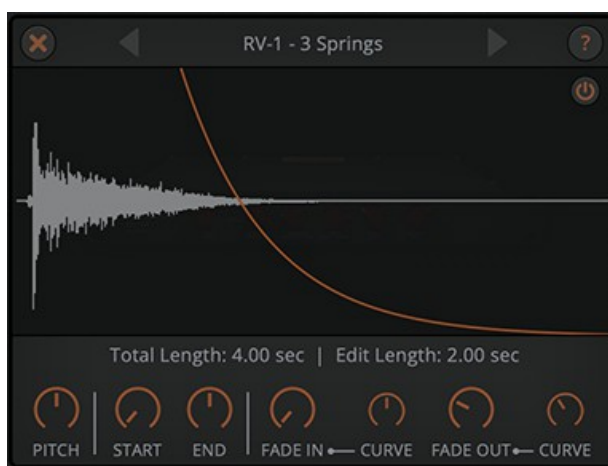


EDITOR

By clicking on the wrench tool button you can open the editor window.

Springs uses a combination of convolution and modeling to recreate each spring reverb. Here you can edit the impulse response of the reverb directly.

This can be useful to fine-tune the size/decay of the reverb, but can also be used to completely mangle the source.

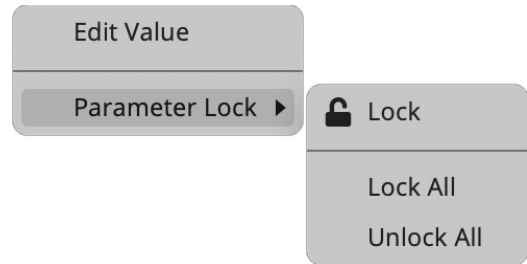


FEATURES

PARAMETER LOCK

If you want to keep the value of one or more parameters while changing presets, or when using the randomizer button, you can use the Parameter Lock feature.

Right click on a parameter and choose *Parameter Lock*.



Lock/Unlock If locked, the parameter won't be updated when changing presets

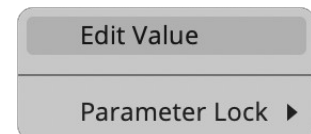
Lock All No parameters will be updated

Unlock All All parameters will be updated

EDIT VALUE

You can also manually change the value for knobs and sliders. Right click on a parameter and choose *Edit Value*.

You can also access this feature with a SHIFT + Click.



By clicking on the ≡ icon you can access additional features.

TAIL BLOCK SIZE

You can choose the block size that Springs will attempt to use to process the tail of the reverb. This is usually processed on a background thread, and in most cases the setting *auto* is the most appropriate. However, if the CPU load is too heavy, you can experiment with different values.

CASE SOUND FX

If this option is enabled, by left clicking on the wooden side panels on the interface, you can hear a “thump” spring reverb sound, similar to hitting the real object...which you shouldn't do...maybe!

WINDOW SIZE

You can resize the plugin window using three predefined sizes (*small, standard, big*). You can also resize the plugin window by clicking and dragging the bottom-right corner of the interface. Double clicking will reset to the *standard* size.

PRESET COPY/PASTE

You can easily share presets by using this Copy/Paste feature.

Copy to Clipboard the status of all parameters will be saved to the Clipboard

Paste from Clipboard load a preset from the Clipboard

ENABLE/DISABLE NOTIFICATIONS

You can enable or disable the notifications for updates and news (shown by the bell icon). This option is *global* and it will affect all AudioThing plugins.

SWAP MOUSE BUTTONS

If you are using the right button as your primary mouse button, the plugin might not recognize it. Use this option to enable it internally in the plugin. This option is *global* and it will affect all AudioThing plugins.

GUI ACCELERATION

You can enable or disable the GUI acceleration supported by your system. The current and default library is OpenGL.

DARK / LIGHT THEME

You can choose a dark or light appearance for menus, popup values, and windows. This option is *global* and it will affect all AudioThing plugins.

END

WHERE IS EVERYTHING?

The installer will place the plugins, presets and other data in these folders.

MAC OS

AU: /Library/Audio/Plug-ins/Components/
VST: /Library/Audio/Plug-ins/VST/
VST3: /Library/Audio/Plug-ins/VST3/
AAX: /Library/Application Support/Avid/Audio/Plug-Ins/
Data: /Users/Shared/AudioThing/

WINDOWS

VST: *custom path from installer*
VST3: \Program Files\Common Files\VST3\
AAX: \Program Files\Common Files\Avid\Audio\Plug-Ins\
Data: \Users\Public\Public Documents\AudioThing\

CREDITS

DSP & Code: Carlo Castellano
Additional DSP: Natanael Nieland
Design: John Gordon (vstyler)
QA Engineer: Giuseppe Marrazzo
Presets: RM ([Ry Manning](#)), GM (Giuseppe Marrazzo)

EULA

Please visit www.audiothing.net/eula/ to review this product EULA.

THANK YOU

Thank you for your purchase! We hope you will have as much fun using it as we had making this product.

For help or any question, feel free to contact us here: www.audiothing.net/contact/

