



VALVES

USER GUIDE

v1.0.2

VALVES.....3
 INSTALLATION.....3
 REGISTRATION.....4
PARAMETERS.....5
FEATURES.....6
 PARAMETER LOCK.....6
 RANDOMIZER.....6
 OVERSAMPLING.....7
 WINDOW SIZE.....7
 PRESET COPY/PASTE.....7
END.....8
 WHERE IS EVERYTHING?.....8
 CREDITS.....8
 EULA.....8
 THANK YOU.....8

VALVES

Valves is a vintage valve emulation plugin with multimode resonant filter and cabinet/EQ section.

The *valve* section is modelled after classic vintage tubes, with added grit and custom gain control. With up to 16x oversampling, Valves can be used to add that authentic tube character to your tracks.

The *filter* section is modelled after a classic ladder filter (2-pole or 4-pole) with multiple modes: low pass, high pass, bandpass and notch. It can be used pre or post valve.

The *cabinet/EQ* section features a selection of modelled cabinets with classic bass and treble EQ controls. You can emulate several types of guitar amplifiers and further shape the overdrive sound.

INSTALLATION

MAC OS

- Double click on the DMG archive to extract it
- Right click on the PKG installer and click open
- Follow the instructions to install the plug-in(s)

WINDOWS

- Extract the ZIP archive
- Double click on the setup file (.exe)
- Follow the instructions to install the plug-in(s)

REGISTRATION

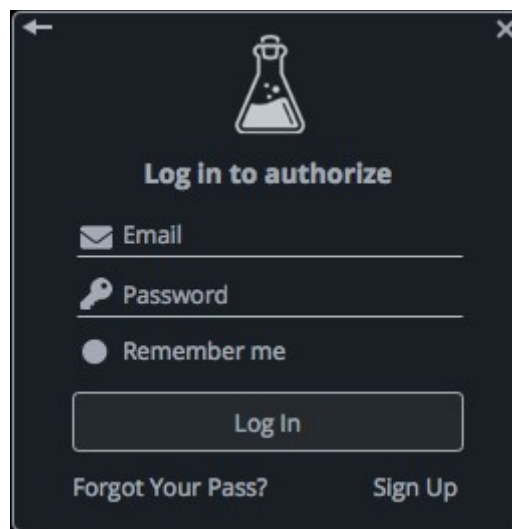
In demo mode the plug-in will output silence for 3 seconds every 45 seconds, and you won't be able to save presets.

You can open the registration window by clicking on the ☰ icon next to the bypass button, in the top-right corner.

You can choose between *Online* and *Offline* authorization.

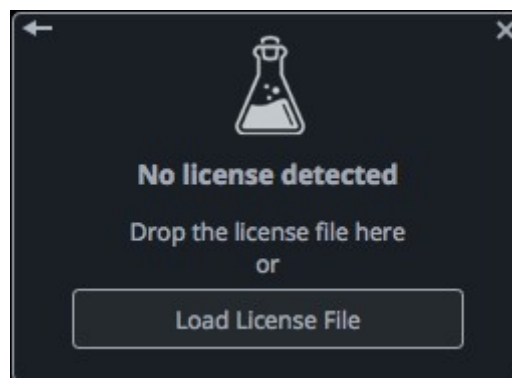
ONLINE

- If you haven't created an account yet, you can [signup here](#) using the same email address used at check out.
- Just input your credentials into the text fields and click on Log In



OFFLINE

- Download the license file from [your account](#).
- Copy the file to your offline computer.
- Just drag and drop the license into the registration window or click on the *Load License File* button and browse to the downloaded license.



PARAMETERS

Valve

<i>Bypass</i>	Enables/Disables the Valve section
<i>Mode (Triode/Pentode)</i>	Chooses the tube configuration
<i>Drive</i>	Controls the amount of distortion
<i>Bias</i>	Controls the amount of current that the tube draws
<i>Tone</i>	Controls an internal lowpass filter cutoff

Cabinet/EQ

<i>Bypass</i>	Enables/Disables the Cabinet/EQ section
<i>Type</i>	Chooses the type of cabinet emulation
<i>Bass</i>	Controls the gain of the Bass band
<i>Treble</i>	Controls the gain of the Treble band

Filter

<i>Bypass</i>	Enables/Disables the Filter section
<i>Mode (Pre/Post)</i>	Chooses the position of the filter (pre or post Valve section)
<i>Type</i>	Chooses between LowPass, HighPass, BandPass, and Notch
<i>Cutoff</i>	Controls the frequency cutoff of the filter
<i>Resonance</i>	Controls the amount of resonance of the filter

Master

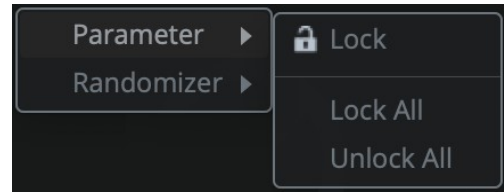
<i>Input</i>	Controls the amount of input signal that goes into the plugin
<i>Mix</i>	Controls the balance between Dry and Wet
<i>Output</i>	Controls the output volume of the plugin
<i>Soft Clip</i>	Applies a Soft Clip that smooths the peaks over 0dB

FEATURES

PARAMETER LOCK

If you want to keep the value of one or more parameters while changing presets, you can use the Parameter Lock feature.

Right click on a parameter and choose Parameter / Lock.



Lock/Unlock If locked, the parameter won't be updated when changing presets

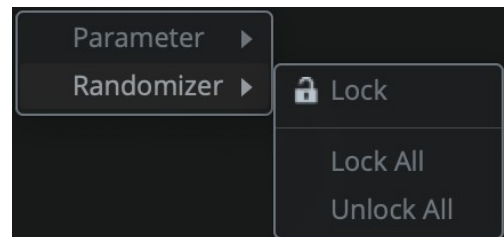
Lock All No parameters will be updated

Unlock All All parameters will be updated

RANDOMIZER

It is possible to randomize the parameters in the interface by clicking on the Random (dice) button in the top bar.


You can also exclude some of the parameters from the randomization. Right click on a parameter and choose Randomizer:



Lock/Unlock If locked, the parameter won't be randomized

Lock All No parameters will be randomized

Unlock All All parameters will be randomized

By clicking on the  icon you can access additional features.

OVERSAMPLING

You can oversample the Valve circuit up to 16x. This is useful to avoid unwanted aliasing generated by the distortion, but it can be heavy on the CPU.

WINDOW SIZE

You can resize the plugin window using three predefined sizes (*small, standard, big*). You can also resize the plugin window by clicking and dragging the bottom-right corner of the interface. Double clicking will reset to the *standard* size.

PRESET COPY/PASTE

You can easily share presets by using this Copy/Paste feature instead of sharing the actual preset file.

By clicking on *Copy to Clipboard*, the status of all parameters will be saved to the Clipboard.

By clicking on *Paste from Clipboard* instead, you can load a preset shared using the previous function.

END

WHERE IS EVERYTHING?

The installer will place the plugins, presets and other data in these folders.

MAC OS

AU: /Library/Audio/Plug-ins/Components/
VST: /Library/Audio/Plug-ins/VST/
VST3: /Library/Audio/Plug-ins/VST3/
AAX: /Library/Application Support/Avid/Audio/Plug-Ins/
Data: /Users/Shared/AudioThing/

WINDOWS

VST: *custom path from installer*
VST3: \Program Files\Common Files\VST3\
AAX: \Program Files\Common Files\Avid\Audio\Plug-Ins\
Data: \Users\Public\Public Documents\AudioThing\

CREDITS

DSP & Code: Carlo Castellano
Design: John Gordon (vstyler)
QA Engineer: Giuseppe Marrazzo
Presets: RM ([Ry Manning](#)), TS ([Tokyo Speirs](#))

EULA

Please visit www.audiothing.net/eula/ to review this product EULA.

THANK YOU

Thank you for your purchase! We hope you will have as much fun using it as we had making this product.

For help or any question, feel free to contact us here: www.audiothing.net/contact/

